

Plasma-Welding Torches "ABIPLAS® WELD" liquid-cooled

ABIPLAS® WELD the name of the new plasma welding torch generation, economical and efficient, from ABICOR BINZEL. Thanks to their compact design ABIPLAS® WELD torches improve accessibility even on difficult component geometries. The very stable process permits spatter free welding and brazing, with high quality joint characteristics. Suitable for both manual and automated welding.



ABIPLAS® WELD 100 W

ABIPLAS® WELD 150 W



ABIPLAS® WELD
100 W MT

ABIPLAS® WELD
150 W MT

ABIPLAS® WELD 100 W ABIPLAS® WELD 100 W MT

Technical data (EN 60 974-7):

Type of cooling:	liquid-cooled
Welding current:	3-100 A
Duty cycle:	100%
Welding speed:	Vs up to 1.5 m/min.
Electrode diameter:	0.8-3.6 mm
Required cooling capacity:	1.1 KW

ABIPLAS® WELD 150 W ABIPLAS® WELD 150 W MT

Technical data (EN 60 974-7):

Type of cooling:	liquid-cooled
Welding current:	15-150 A
Duty cycle:	100%
Welding speed:	Vs up to 4.0 m/min.
Electrode diameter:	1.2-3.0 mm
Required cooling capacity:	1.5 KW

Torch complete Type	Connector*	Part-No.	
		4 m	8 m
ABIPLAS® WELD 100 W	Central connector	698.0075	698.0085
ABIPLAS® WELD 100 W MT 70	Central connector	698.1010	698.1011
ABIPLAS® WELD 100 W MT	Central connector	698.1013	698.1014
ABIPLAS® WELD 150 W	Central connector	698.2023	698.2024
ABIPLAS® WELD 150 W MT 70	Central connector	698.3009	698.3010
ABIPLAS® WELD 150 W MT	Central connector	698.3011	698.3012

Torch body Type	Part-No.
ABIPLAS® WELD 100 W MT 70	698.0134
ABIPLAS® WELD 100 W MT	698.1001
ABIPLAS® WELD 150 W	698.2001
ABIPLAS® WELD 150 W MT 70	698.2080
ABIPLAS® WELD 150 W MT	698.3001

*Other versions (single or central adaptor) available on request.

ABIPLAS® WELD 100 W / MT

ABIPLAS® WELD 150 W / MT

Wear parts

ABIPLAS® WELD 100 W / MT

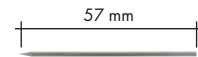
ABIPLAS® WELD 150 W / MT

Torch cap



Ø 1.0 mm	698.0058	-
Ø 1.6 mm	698.0059	698.2033
Ø 2.4 mm	698.0016	698.2030
Ø 3.2 mm	698.0027	698.2012

Tungsten electrode



Ø 1.0 mm	698.0064	-
Ø 1.6 mm	698.0065	698.0065
Ø 2.4 mm	698.0066	698.0066
Ø 3.2 mm	698.0067	698.0067

Centering ceramic



Ø 1.0 mm	698.0054	-
Ø 1.6 mm	698.0055	698.2035
Ø 2.4 mm	699.0081	698.2032
Ø 3.2 mm	698.0029	698.2020

Insulating ring



	698.0048	699.0041
--	----------	----------

Nozzle



Ø 0.8 mm	698.0060	698.0077	-	-
Ø 1.2 mm	698.0061	698.0078	698.2036	-
Ø 1.4 mm	-	-	698.2037	-
Ø 1.6 mm	-	-	698.2038	698.2057
Ø 1.7 mm	698.0062	698.0079	-	-
Ø 1.8 mm	-	-	698.2014	-
Ø 2.0 mm	-	-	698.2015	698.2058
Ø 2.3 mm	698.0019	698.0080	698.2016	-
Ø 2.6 mm	698.0063	698.0081	698.2017	698.2059
Ø 3.0 mm	698.0030	-	698.2018	-
Ø 3.6 mm	698.0053	-	-	-

Gas diffuser



	698.0012	698.2009
--	----------	----------

Shielding gas nozzle



	698.0015	698.0082	699.0071	698.2060
--	----------	----------	----------	----------

Adjust gauge



	698.0018	698.0083	698.2019	698.2062
--	----------	----------	----------	----------

Bikox, Hoses, Power-, Control- and Pilot cables

I. Cable assembly PLASMA-Cutting Torches air-cooled

Type	Power cable		Bikox		Pilot cable 1 pole per m	Control cable per m	
	4 m	6 m	4 m	6 m		2 pole	3 pole
ABIPLAS® CUT 70	-	116.D003	-	-	100.0074	-	100.0100
ABIPLAS® CUT MT 70	-	116.D003	-	-	100.0074	-	100.0100
ABIPLAS® CUT 110	-	116.D003	-	-	100.0074	-	100.0100
ABIPLAS® CUT MT 110	-	116.D003	-	-	100.0074	-	100.0100
ABIPLAS® CUT 150	-	116.D004	-	-	100.0074	-	100.0100
ABIPLAS® CUT MT 150	-	116.D004	-	-	100.0074	-	100.0100
PSB 31 KZS/KKS	-	-	189.0001	189.0004	-	-	-
PSB 31 HFS	116.0470	116.0472	-	-	100.0074	100.0099	-
PSB 60 S	-	-	117.0132	117.0133	100.0074	100.0099	-
AUT PSB 60 L	-	-	-	117.0020	100.0074	-	-
PSB 121 S	-	-	117.0033	117.0004	100.0074	100.0099	-
AUT PSB 121 L	-	-	-	117.0010	100.0074	-	-

II. Cable assembly PLASMA-Cutting Torches liquid-cooled

Type	Power cable SC		Power cable CC		Pilot cable 1 pole per m	Control cable 2 pole per m
	6 m	12 m	6 m	12 m		
ABIPLAS® CUT 200 W	115.0520	115.0525	115.0522	115.0526	100.0074	100.0099
ABIPLAS® CUT MT 200 W	115.0520	115.0525	115.0522	115.0526	100.0074	100.0099

III. Cable assembly PLASMA-Welding Torches liquid-cooled

Type	Power cable 1		Power cable 2		Pilot cable 1 pole per m	Control cable 7 pole per m
	4 m	8 m	4 m	8 m		
ABIPLAS® WELD 100 W	150.0123	150.0124	150.0125	150.0126	100.0074	100.0112
ABIPLAS® WELD MT 100 W	150.0123	150.0124	150.0125	150.0126	100.0074	100.0112
ABIPLAS® WELD 150 W	150.0123	150.0124	150.0125	150.0126	100.0074	100.0112
ABIPLAS® WELD MT 150 W	150.0123	150.0124	150.0125	150.0126	100.0074	100.0112

Hoses and Hose clamps

IV. Gas hoses, Water hoses and Outer hoses

Type	Gas hose	Water hose (feed)	Water hose (return)	Outer hose	
	per m	per m	per m	6 m	per m
ABIPLAS® CUT 70	-	-	-	107.D004*	-
ABIPLAS® CUT MT 70	-	-	-	107.D004*	-
ABIPLAS® CUT 110	-	-	-	107.D004*	-
ABIPLAS® CUT MT 110	-	-	-	107.D004*	-
ABIPLAS® CUT 150	-	-	-	107.D005*	-
ABIPLAS® CUT MT 150	-	-	-	107.D005*	-
ABIPLAS® CUT 200 W	109.0032	109.0057	109.0056	-	107.0004
ABIPLAS® CUT MT 200 W	109.0032	109.0057	109.0056	-	107.0004
PSB 31 KZS/KKS	-	-	-	-	-
PSB 31 HFS	-	-	-	-	110.0018
PSB 60 S	-	-	-	-	105.0005
AUT PSB 60 L	-	-	-	-	105.0005
PSB 121 S	102.0124	-	-	-	105.0005
AUT PSB 121 L	102.0124	-	-	-	105.0005
ABIPLAS® WELD 100 W	109.0055	109.0011	109.0011	-	105.0005
ABIPLAS® WELD MT 100 W	109.0055	109.0011	109.0011	-	105.0005
ABIPLAS® WELD 150 W	109.0055	109.0011	109.0011	-	105.0005
ABIPLAS® WELD MT 150 W	109.0055	109.0011	109.0011	-	105.0005

*Only for single connection. Central connection on request.

V. Leather hoses and hose coupling

Type	Description	Part-No.
ABIPLAS® WELD 100 W	Leather hose 0.8 m	108.0028
ABIPLAS® WELD 150 W		
ABIPLAS® WELD 100 W	Hose coupling complete for connecting leather and outer hose	400.0391
ABIPLAS® WELD 150 W		

VI. Hose clamps

Type	Part-No. (20 pcs.)	for hose					
		102.0124	109.0011	109.0032	109.0055	109.0056	109.0057
Hose clamp Ø=9.0 with ring (mark. 9.5)	173.0001	•		•		•	•
Hose clamp Ø=6.2 with ring (mark. 6.6)	173.0006				•		
Hose clamp Ø=7.5 with ring (mark. 8.0)	173.0007		•				
Hose clamp Ø=5.7 with ring (mark. 6.1)	173.0008				•		

Handles, Handle tubes, Torch carriage and Condensate filter

VII. Handles, Control modules, Trigger, Switch guard and ball and socket joint / Sleeve

Type	Handle	Control module UP/DOWN	Trigger	Switch guard	Ball and socket joint / Sleeve
ABIPLAS® CUT 70	745.D046	-	185.D065	400.D252	-
ABIPLAS® CUT 110	745.D046	-	185.D065	400.D252	-
ABIPLAS® CUT 150	757.D003	-	185.D065	400.D252	-
ABIPLAS® CUT 200 W	758.D001	-	185.D039	-	-
PSB 31 KZS /KKS	742.0044	-	185.0010	-	002.0064
PSB 31 HFS	742.0044	-	185.0010	-	742.0185
PSB 60 S	743.0038	-	-	-	-
PSB 121 S	743.0038	-	-	-	-
ABIPLAS® WELD 100 W	180.0109	400.0940	-	-	400.0991
ABIPLAS® WELD 150 W	180.0109	400.0940	-	-	400.0991

VIII. Handle tubes, Adaptors, Coupling nut, Cable support spring and Mounting

Type	Handle tube	Adaptor for handle tube	Cable support spring	Mounting cpl.
ABIPLAS® CUT MT 70	757.D087	500.D049	-	757.D089
ABIPLAS® CUT MT 110	757.D087	500.D049	-	757.D089
ABIPLAS® CUT MT 150	757.D087	400.0137	-	757.D089
ABIPLAS® CUT MT 200 W	758.1008	-	-	780.0260
AUT PSB 60 L	743.0211	-	-	-
AUT PSB 121 L	743.0211	-	-	-
ABIPLAS® WELD MT 100 W	698.1017	-	775.1341	780.0222
ABIPLAS® WELD MT 150 W	698.1017	-	775.1341	780.0222
ABIPLAS® WELD MT 100 W 70	698.1017	-	775.1341	780.0222
ABIPLAS® WELD MT 150 W 70	698.1017	-	774.1341	780.0222

IX. Torch carriage

Type	Torch carriage	Extension arm		Extension arm holder	
		250 mm	440 mm	Centre pin	Thread
PSB 31	742.0187	-	743.0346	743.0342	743.0343
PSB 60 S / PSB 121 S with spring support	742.0027	-	743.0346	743.0342	743.0343
ABIPLAS® CUT 70	742.D043	742.D052	-	743.0342	-
ABIPLAS® CUT 110	745.D070	742.D052	-	743.0342	-
ABIPLAS® CUT 150	745.D070	742.D052	-	743.0342	-
ABIPLAS® CUT MT 200 W	758.0056	742.D052	-	743.0342	-

X. Condensate filter

Type	Part-No.
Condensate filter	743.0294
Condensate filter for replacement	743.0384